

DECLARATION OF PERFORMANCE

NO 1376

24



Product type unique identifier: PA33CL50P

Application: Sandwich panels with mineral wool core and sheet metal surface;
exterior walls, partitions, suspended ceilings

Manufacturer name: Isolamin Sweden AB, Industrivägen 5, SE-95632 Överkalix

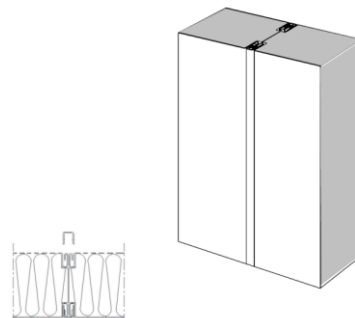
System: 3

Harmonized standard:-

SP Swedish Testing and Research Institute No. 1002 report 0402-CPD-P605003B

DBI Danish Institute of Fire and Security Technology rapport nr PG10781

Akoustic group Luleå Technical University rapport nr 9404061-1 och nr 941123-1



Panel	33CL50P
Thickness	50 mm
Weight	19,1 kg/m²
Standard widths	565, 1180 mm
U-value	0.89 W/m²K

Essential characteristics	Performance	Harmonized technical specification
Tensile strength	NPD	EN 14509:2013
Shear strength	NPD	EN 14509:2013
Sliding Module	NPD	EN 14509:2013
Compressive	NPD	EN 14509:2013
Bending resistance	NPD	EN 14509:2013
Reaction to fire	A2-s1-d0	SS-EN 13501-1:2007
Fire resistance	EI30	EN 13501-2:2016
Fire protection capability	NPD	EN 14509:2013
Thermal resistance	0.96 m² K/W	EN 14509:2013
Permeability of water	NPD	SS-EN 12865
Air permeability	NPD	SS-EN 11214
Vapor permeability	NPD	EN 14509:2013
Airborne sound insulation	34 Rw	ISO 140-3:95
Sound absorption	Class B	SS-EN ISO 11654
Dimensional stability	PASS	EN 14509:2013
Durability	PASS	EN 14509:2013

Tolerans	Core material	Surface material
Length: ± 5 mm Width: ± 1 mm Thickness: +0/-1 mm Perpendicularity: 1 mm/m Surface roughness: +0/-0.35 mm	Material: Mineral wool Density: 180 kg/m ³ ±10%	Material: Hot dip galvanized steel sheet Thickness: 0.7/0.7mm Performance: 23%

Signed on behalf of the manufacturer:

Överkalix 2024-03-04

Michael Ottesen Fossen

Isolamin Sweden AB

R&D Technician / Project Coordinator