



DECLARATION OF PERFORMANCE

NO 1430

24



Unique identifier of the product type: PA34CL120

Application: Sandwich panels with mineral wool core and sheet metal surface;
exterior walls, partitions, suspended ceilings

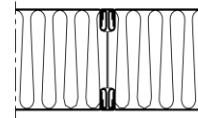
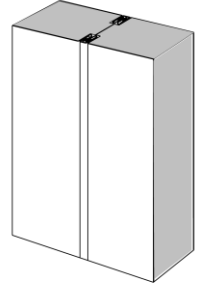
Manufacturer name: Isolamin Sweden AB, Industrivägen 5, SE-95632 Överkalix

System: 3

Harmonised standard: EN 14509:2013

SP Swedish Testing and Research Institute No. 1002 report 0402-CPD-P605003B

DBI Danish Institute of Fire and Security Technology nr 9926 rapport PC10044



| | |
|-----------------|-------------------------|
| Panel | 34CL120 |
| Thickness | 120 mm |
| Weight | 35,2 kg/m ² |
| Standard widths | 565, 1180 mm |
| U-value | 0.39 W/m ² K |

| Essential characteristics | Performance | Harmonised technical specification |
|----------------------------|-------------------------|------------------------------------|
| Tensile strength | NPD | EN 14509:2013 |
| Shear strength | NPD | EN 14509:2013 |
| Sliding Module | NPD | EN 14509:2013 |
| Compressive | NPD | EN 14509:2013 |
| Bending resistance | NPD | EN 14509:2013 |
| Reaction to fire | A2-s1-d0 | EN 13501-1:2007 |
| Fire resistance | EI60 | EN 13501-2:2003 |
| Fire protection capability | NPD | EN 14509:2013 |
| Thermal resistance | 2.36 m ² K/W | EN 14509:2013 |
| Permeability of water | NPD | EN 12865 |
| Air permeability | NPD | EN 11214 |
| Vapor permeability | NPD | EN 14509:2013 |
| Airborne sound insulation | NPD | EN ISO 717-1 |
| Sound absorption | NPD | EN ISO 11654 |
| Dimensional stability | PASS | EN 14509:2013 |
| Durability | PASS | EN 14509:2013 |

| Tolerans | Core material | Surface material |
|--|---|--|
| Length: ± 5 mm Width: ± 1 mm Thickness: +0/-1 mm Perpendicularity: 1 mm/m Surface roughness: +0/-0.35 mm | Material: Mineral wool Density: 180 kg/m ³ ±10% | Material: Hot dip galvanized steel sheet Thickness: 0.7mm / 1mm |

Signed on behalf of the manufacturer:

Överkalix 2024-03-04

Michael Ottesen Fossen

Michael Ottesen Fossen

Isolamin Sweden AB

R&D Technician / Project coordinator